

# Build Your Own New York

accessories for your Empire State Building postcard model  
1:4000 scale

## King Kong

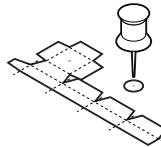


Even an enormous movie monster looks tiny at this small scale. The larger cutout to the left may be easier to position climbing up your Empire State Building model, while the smaller cutout is scaled correctly to Kong's estimated size of 50-60 feet tall.

In the 1933 feature, Kong climbed to the top of the Empire State's spire to escape the horrors of captivity, only to be shot down by fighter planes, perhaps the planes launched from the Akron.

## U.S.S. Akron

- 1 First you will need to prepare your Empire State Building for mooring a dirigible. While building the observation level and mooring mast of skyscraper model, poke a hole in the two rooftop pieces using a needle or thumbtack.

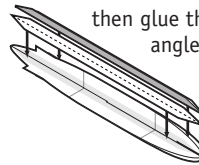


To attach the dirigible to the tower, use a small length of stiff wire or cut the head off a pin. Cut and bend to form an "L" shape at the size indicated.

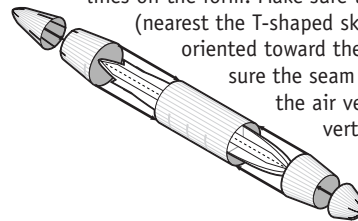


Continue building the Empire State Building model following the instructions on the printed postcard, but do not include the modern TV antenna.

- 2 To build the U.S.S. Akron, cut out the two interior forms and the four corner braces. Slide one slotted interior form onto the other, then glue the corner braces to keep the forms at 90-degree angles from each other.

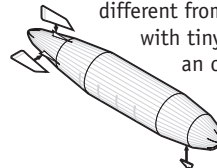


- 3 Cut out the five exterior pieces of the dirigible. Roll and glue each piece to form a cylinder or cone first. Slide the center cylinder onto the interior form, lining up the ends of the cylinder with the grey lines on the form. Make sure the front end of the cylinder (nearest the T-shaped skyplane port on the bottom) is oriented toward the front of the airship. Likewise, make sure the seam at the bottom of the cylinder and the air vents at the top match up with the vertical interior form.

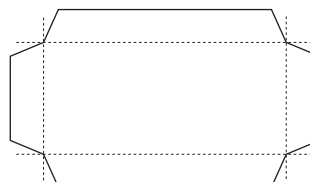


Add each exterior piece toward the ends. The slots on the rear cone fit over the base of the fins on the interior forms.

- 4 Fold the four fins and glue in place. The bottom fin is slightly different from the others, with tiny windows of an observation post used when landing the Akron.

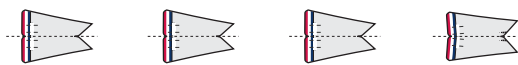
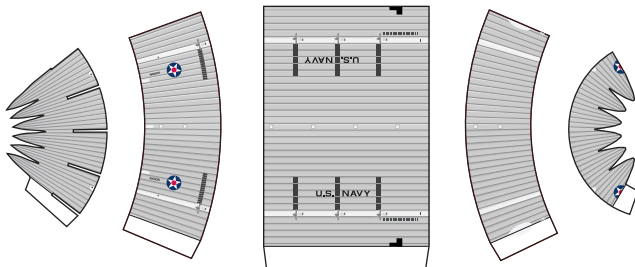
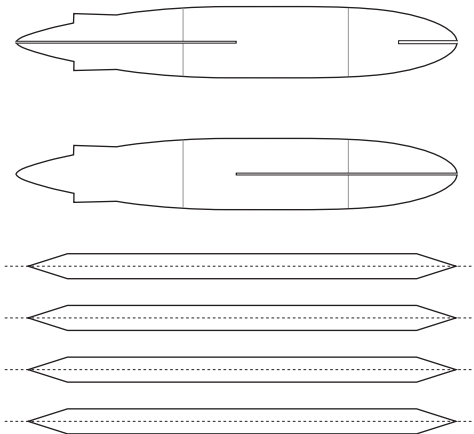
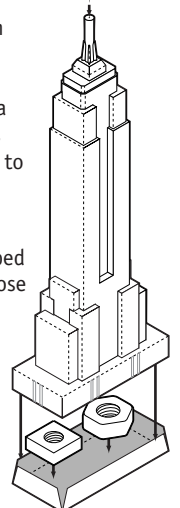


Fold the gondola and add it to the bottom near the front of the airship



- 5 Add the bottom piece to the Empire State Building. Glue a few metal bolts inside the base to counterbalance the tower.

Glue the L-shaped wire into the nose of the dirigible and insert the other end into the small hole in the top of the mooring mast.



Wurlington Bros Press  
www.BuildYourOwnNewYork.com

©Matt Bergstrom